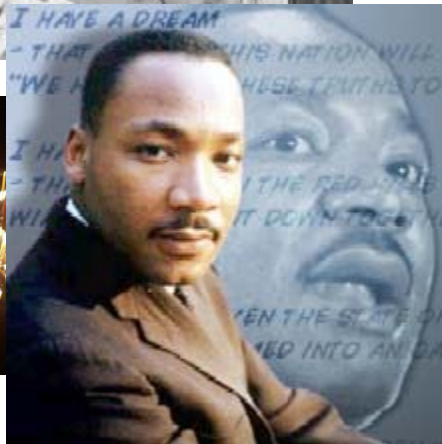
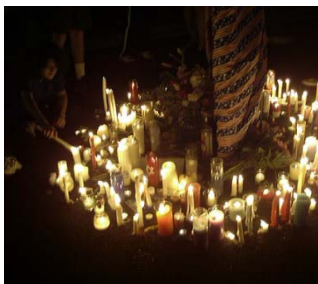


# Greenville Unitarian Universalist Fellowship



## *That Was A Prayer*



November 15, 2009

---

**Reverend Pat Jobe**  
Minister

**Kris Beliakoff**  
Director of Lifespan Religious Education & Administration

# GREENVILLE UNITARIAN UNIVERSALIST FELLOWSHIP

Sunday, November 15, 2009

## *Order of Service*

<b>Gathering Music</b>		Linda Mattern
<b>Welcome</b>		Reverend Pat Jobe
<b>Sharing the Hand of Fellowship</b>	<i>ala Masankho Banda</i>	All sing
<b>Prelude</b>		Linda Mattern
<b>Chalice Lighting</b>		Steve Compton
<b>Opening Words</b>		Reverend Pat Jobe
<b>* Opening Song</b>	<i>Be Thou My Vision – # 20</i>	All sing
<b>Community Caring</b>	<i>Please share your joys &amp; sorrows in our Community Memory Book before or after the service.</i>	
<b>Candles of Joys &amp; Sorrows</b>		Reverend Pat Jobe
<b>A Story for All Ages</b>		Reverend Pat Jobe
<b>Children's Benediction</b>	<i>Go Now in Peace – # 413</i>	All sing
<b>Words for Reflection</b>		Steve Compton
<b>Silence for Reflection &amp; Musical Response</b>		Linda Mattern
<b>Offertory</b>		Linda Mattern
<b>Sermon</b>	<i>That Was A Prayer</i>	Reverend Pat Jobe
<b>* Closing Song</b>	<i>Though I May Speak with Bravest Fire – # 34</i>	All sing
<b>Closing Words</b>		Reverend Pat Jobe
<b>Postlude</b>		Linda Mattern
<b>Benediction</b>		Reverend Pat Jobe

### **"Hymn Hotline"**



Feeling despaired in a way that only your favorite tune can cure? Never fear, the Hymn Hotline is here! Let us know what you'd like to hear and we will get it in the service, and with a nod your way to boot! Email [music@greenvilleuu.org](mailto:music@greenvilleuu.org) today!

**“Joys and Sorrows”** -- You may write your Joys or Sorrows in the Memory Book on the table in the front of the Sanctuary. The worship associate will then craft a short prayer lifting up those Joys and Sorrows. If you are not inclined to write in the book, you may also simply light a candle in silence.



*Thanks to Our Service Associates ~*

Worship Associate ..... Steve Compton  
Pianist & Song Leader ..... Linda Mattern  
Ushers ..... Helen & Eric Anderson  
Greeters ..... Ellen & Ron Hilderbrand  
Sound Crew ..... Chevar Ray Brown, Richard Fuller & Reed Humphrey

*\*Please rise in body or in spirit as you are willing and able.*

*Please turn off cell phones, pagers, etc. before our service begins.*

- *Welcome Newcomers!* If you are here for the first or second time, please feel free to let the offering basket pass you by; you are our guest. After the service, you are warmly welcome to join us in the Right Over Flow Room, under the Welcome Banner, for coffee and conversation. Welcoming members will be there to meet and talk with you.
- Recordings of Sunday Services may be ordered and picked up opposite the wooden entrance doors to the sanctuary where the Audio Stand is located or by email to [recorded4uu@gmail.com](mailto:recorded4uu@gmail.com).

Sunday, November 22<sup>nd</sup>, 2009, 11 a.m.

***Darwin: His Unitarian Roots and Purpose***

***Steve Compton***

For more information visit [www.greenvilleuu.org](http://www.greenvilleuu.org)

The amount needed each week ***from pledges and other contributions*** is \$5,360.

**11/8/2009 Service \$ 34,021**  
*(Large amount due to pledge statement response)*

**Year to date weekly average \$ 5,071**

# Highlights in Lifespan Religious Education

From Babies to Sages  
November 15th, 2009

## Classes and Events Today

9:30 AM Childcare Opens— ages newborn to 3 years old, 4 if newcomer. Saving Jesus, Adults

9:45 to 10:45 Course in Miracles, Discussion Group, UU Orienteering, Adults

9:45 to 10:45 Children's activities ages 4 and up, preparing food for the Alternative Gift Fair

11:00-12:00 Middle School and High School classes

11:15 – 12:15 Children's classes ages 3 through 6<sup>th</sup> grade

**For photos from events, join Facebook and "befriend" GUUF DLREA. Parents, make sure your children are registered to stay in the information loop!**

## Children and Youth Religious Education

### Dates to know

November 13<sup>th</sup>-15<sup>th</sup> – Middle School Mountain Trip, 5 PM Friday to 3 PM Sunday

November 22<sup>nd</sup> — All RE classes adapt to help or directly help the Alternative Gift Fair

November 29<sup>th</sup> — **NO RE classes or programming at any hour.** 9:30 AM to 12:30 PM childcare still available. Happy Thanksgiving!

December 11<sup>th</sup>-12<sup>th</sup> -- Middle School Poverty LockIn, 6:30 Friday to 11:30 Saturday morning.

**Next RE Meetings:** Children and Youth – December 13<sup>th</sup>, 10 AM; Adult RE — TBD. Check your weekly *Spark*. New committee members always welcome!

## Sunday morning adult RE classes

Childcare and/or children's activities are provided for the littlest ones so all of you (with children or without) can come early and replenish your spirit, meet some great fellow GUUF community members and enter into great dialogue. Grab a cup of coffee from our GUUF Café and try one of the following:

Course in Miracles — What if we are all connected and what we see is an illusionary experience? 9:30 AM, PK—K class room.

Discussion Group — Topical and changes week to week. Occasionally hosts a curricular topic. 9:45 AM, Founders Room.

Saving Jesus — Liberal interpretation of the man named Jesus and the teachings that have shaped our culture. 9:30 AM Downstairs lounge.

Choir — Sing, play an instrument, tap your toes, just join! 9:30 AM

Spirit Play manipulatives — Help us prepare our amazing story materials. 10 AM .

Scrapbookers — Help us preserve the memories of this wonderful spiritual community. 10 AM.

Knitting ministry — Relaxed time to chat and help out refugees facing another harsh winter. 10 AM.

### **Adult RE One Day, One Hour Seminars**

We are currently putting together one hour, one day Sunday morning seminars to begin this winter. Designed for adults and older teens, these seminars will be at 9:45 AM and will cover a wide range of topics from lowering your house's carbon footprint, to poetry writing, to Zen parenting. This is an excellent opportunity to learn more about a topic that interests you or to share a passion of your's with a warm group of eager-to-learn adults that arrive here early on Sundays. If you are interested in leading a session, please see Kris B. She will make sure you find a date that works for you! (Since I wrote this we have received many wonderful offers. Thank you! This effort promises to be exciting!)

### **10 AM Children's Activities Schedule and Needs**

We offer children's activities and supervision from 9:30 AM to 10:45 AM, to allow parents a chance to attend Adult RE classes, sing in the choir, work on a project such as the scrapbooking project, or visit with other adults. We wish to offer a chance for fellowship, social action, children's worship, and fun. (All children are welcome to attend, even if their parents are not attending classes themselves.) All ages mix together and wonderful friendships develop. Currently our teens and Kris have been hosting most of these events. Due to teaching duties, Kris cannot always be there, and sometimes our teens can't either. So, we need adult volunteers or other teens (earn Beta club points, the adoration of the little ones) to step forward to help. This time is incredibly relaxed and the attendance is usually small (so far!), so the help, while needed, is very easy! Blank lines indicate where we need help. *Parents, note that this is the time frame that we will now do some of our most beloved traditions such as the Yule Log.*

#### ***Can you help? Activities start at 10 AM***

- 15-Nov-09 Alternative Gift Fair assistance: Kris B. and \_\_?\_\_
- 22-Nov-09 Clearing of classrooms for AGF: Kris B. and \_\_?\_\_
- 29-Nov-09 Game room \_\_?\_\_ and \_\_?\_\_
- 6-Dec-09 Children's Chapel and decorating RE tree Kris B. and \_\_?\_\_
- 13-Dec-09 Practice songs for the service, and if time permits  
Humane society project : \_\_?\_\_ and \_\_?\_\_
- 20-Dec-09 Practice song for service: \_\_?\_\_ and \_\_?\_\_
- 27-Dec-09 New Year's- related activity or craft: \_\_?\_\_ and \_\_?\_\_
- 3-Jan-10 Children's Chapel (Yule Log!): Kris and \_\_?\_\_
- 10-Jan-10 Lego competition: \_\_?\_\_ and \_\_?\_\_
- 17-Jan-10 Play room: \_\_?\_\_ and \_\_?\_\_
- 24-Jan-10 Decorations for spaghetti luncheon/Special Friends:  
\_\_?\_\_ and \_\_?\_\_
- 31-Jan-10 Decorations for spaghetti luncheon/Special Friends \_\_?\_\_  
and \_\_?\_\_
- 7-Feb-10 Southern Side Sandwiches: \_\_?\_\_ and \_\_?\_\_
- 14-Feb-10 Children's Chapel and gifts for Special Friends: Kris and \_\_?

## Are you willing to share your Spiritual Practice with our youth?

Our senior high class is a very busy group that takes time once or twice a month to slow down and experience a spiritual practice shared by an adult. Do you have one that you are willing to share? Yoga? Meditation? Painting? Knitting? Hiking? Social action? If you would be willing to join our class one morning at 11 AM, please let Kris know and she will help you plan and find a date in the calendar that works for you. This group has completed the Coming of Age program.

### How to Reach Us:

Kris Beliakoff, Director of Lifespan Religious Education & Administration  
Office 271-4883, Cell 906-5368, Email: [dre@greenvilleuu.org](mailto:dre@greenvilleuu.org)  
Office Days: Sun – Thurs  
Bridget Thompson, Youth Director  
Email: [youthdirector@greenvilleuu.org](mailto:youthdirector@greenvilleuu.org)  
Karen Conrad, Adult Religious Education Chair  
Email: [innisfreedesigns@yahoo.com](mailto:innisfreedesigns@yahoo.com)  
Jennifer Cowden, Children and Youth Religious Education Co-Chair,  
<[cowden@charter.net](mailto:cowden@charter.net)>,  
Steve Duda, Children and Youth Religious Education Co-Chair,  
[Steve.Duda@aecom.co](mailto:Steve.Duda@aecom.co)

### ~~On Going Meetings and Classes~~

#### *Childcare begins at 9:30 am each Sunday*

**A Course in Miracles** (CC) Sundays, 9:45 — 10:45 am, Contact: Jean Blank (239-0110)

**African Drumming** (CR) Thursdays 6:30 – 7:00 pm, beginners welcome for mini-class, Contact: Joan Baker (232-1660)

**Finger Food & A Movie** (FR) 2<sup>nd</sup> Sunday each month, 6 — 10 pm, Contact: Bo Boghani (458-8332)

**Discussion Group** (FR) Sundays, 9:45 — 10:45 am, Contact: Cliff Beck (848-9734)

**Women's Book Group** (WR) 2<sup>nd</sup> Sunday each month, Contact: Susan Cooper (288-4912)

**Zen Meditation** (SAC) Tuesdays, 7:30 pm promptly, if you need some guidance then show up at 7:15 pm, website: [meditation.meetup.com/216](http://meditation.meetup.com/216) Contact: Carole McAfee (834-7390)

**Old GUUFers** (Off Site) 2<sup>nd</sup> Thursday each month, 12:00 – 2:00 pm, Contact: Suzanne Hart (235-1714)

**GUUF Singers** (CR) Sundays, 9:30 – 10:45 am, Contact: Miriam Davidson (285-0994 or [miriam@wishingchair.com](mailto:miriam@wishingchair.com))

**Hiking Group** (Off Site) on going with dates and locations to be determined, Contact: Karen Csizmadia (322-6441)

**New Earth Spirit Group** (TBA) 2<sup>nd</sup> Saturday each month, will support all fire ceremonies, interested persons should contact: Dana Couillard at (423-4221 or [windwalkermoon@yahoo.com](mailto:windwalkermoon@yahoo.com))



## alternative gift fair

When: Sunday November 22, 12:30 to 2:30 pm  
Where: GUUF Overflow Rooms & Lobby Area  
Volunteers Needed For: Logistics, Food, and  
Publicity

**Due to the squeezed space this year, the fair will open at noon for GUUF members only. We are promoting the start time to the general public as 12:30. Please join us!**

The Alternative Gift Fair is an opportunity to honor friends and family with donations to worthy causes, instead of buying more "stuff" to clutter up their closets. Then, present them with lovely cards describing their gifts. For those on your list who require actual "stuff," 10,000 Villages will have a display of fair trade gifts from artisans around the world.

This year, give a gift that truly keeps on giving...like a chicken for Central American villagers, or shoes for an Upstate family, or antibiotics for an uninsured child with an ear infection. Here's a list of organizations that you can support at the fair: GAIHN, Greenville Free Medical Clinic, Habitat for Humanity of Greenville County, Heifer International, Pendleton Place Children's Shelter, Southernside Community Center, Speak for Animals, Sprout Nicaragua, The Nature Conservancy, and UU World of Children. Alternative gifts range from \$5 to \$100 and are all tax deductible. To volunteer or for more information, call Nancy Fitzer at 864-370-3493.

### **An Evening of Poetry**

Thursday, Nov. 19 from 7 p.m. until 9 p.m. in the Founder's Room, Poets Carol Frome, Nan Lundeen, and J. Stephen Rhodes will present readings from their works, including Rhodes's new book, "The Time I Didn't Know What To Do Next." Frome and Lundeen are members of the fellowship and Rhodes is a friend of Linda Mattern. The evening is part of Rev. Pat Jobe's efforts to provide community events during week nights. Please invite your non UU friends and if the crowd exceeds the Founder's Room, we'll move it to the sanctuary. The poetry is excellent, so much better than an evening in front of TV.

### **Getting In Touch with Reverend Jobe**

From Rev. Pat Jobe: I have been reluctant to post my office hours because I am also working hard to follow my mandate to get out in the community. Have met with many wonderful folks who lead nonprofit groups and other congregations, and all of them are recommending I meet with and get to know other wonderful people in the community. It is a daunting task, but I also find I am in the office a lot, except on Tuesdays, which is my day off. So, anytime you would like to schedule

office time with me, call Corry or call me on my cell, 843-708-1033. I am almost always in the office on Wednesdays from 11 a.m. until 3 p.m. and those are good hours for Mondays, Thursdays, and Fridays, too. I try to see people early in the morning or late in the afternoon, so midday is the best time to see me in the office.

Martha Baron very graciously shared with me a newsletter from her former congregation at Manhasset, NY with some general guidelines of when it a good time to call the minister. I like these and share them with you as general guidelines. Bottom line, if you would like to talk with me, get it touch. I may not be able to respond instantly, but pretty fast is my habit. Here is the list from the Rev. Dr. Paul S. Johnson: when you want to talk about religion or spirituality, when someone is in the hospital or is going to be, when someone is confined and would like to be visited, where there is a death in the family, when you wish to discuss funeral or memorial arrangements ahead of time, when you wish to plan a wedding, when you have children to be dedicated, when you have serious difficulties in your marriage or family life, when you are arrested or in jail, when you have personal problems you would like to discuss, when you have an important career or educational decision to make, when you want to compliment our staff on the work we're doing or when you think anything is going well in congregational life, when you are unhappy or upset about anything going on, when you have prospective members in mind, when you'd like to get to know us better, when you would like to consult with us regarding your leadership responsibilities in the congregation.

That's the list from The Rev. Dr. Paul Johnson, but remember, if you feel like getting in touch, get in touch.

### *∞ Congregational Care Items ∞*

*We extend our loving support to:*

Ben and Melissa Williams and family during Melissa's hospitalization.  
Jennifer and Mark Hauser whose daughter, Emma, has developed a potential health problem.  
Martha Baron's friend in Iowa whose son was taken off life support.  
Linda Turner whose father passed away in Minnesota.  
Austin Ann Johnson whose friend, Jack, passed away in Boston.  
Susan Hiers whose mother-in-law passed away.  
Richard Fuller's mother who broke her hip.

*We celebrate with:*

Annie Pal who turned 60 and became a crone.  
Tim Gamrin who has a new job and new apartment.

*If you or a member of your family are in crisis or are hospitalized, please contact Pat Jobe at 843-708-1033 or contact the office during office hours. Pat is available 24/7 for emergencies, but other needs can generally come through the office. Pat is working on getting a local cell phone.*